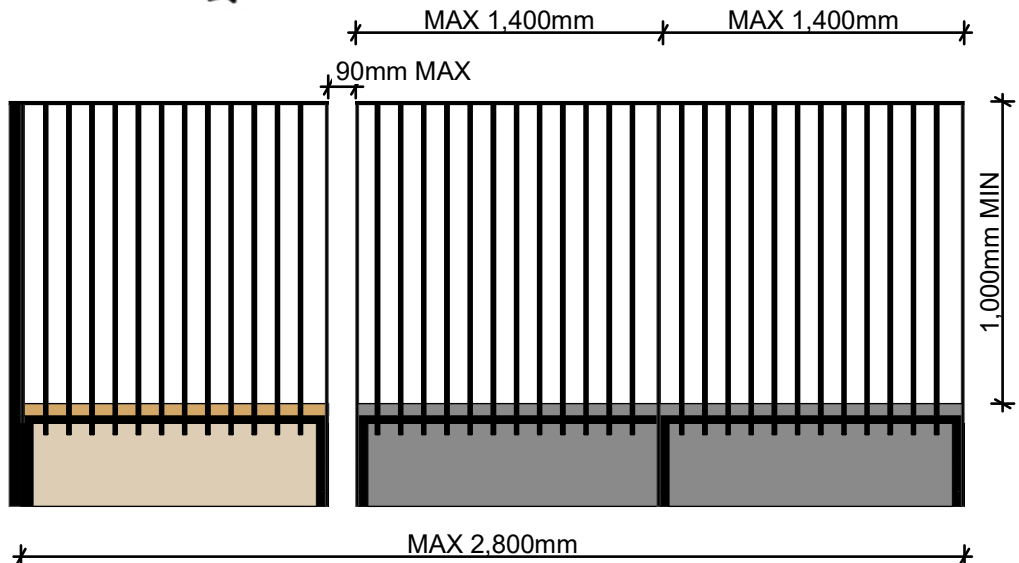
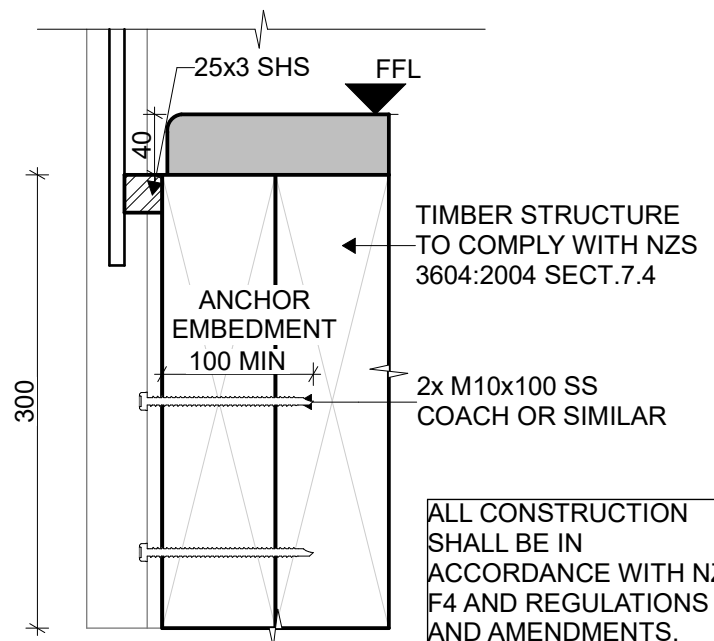
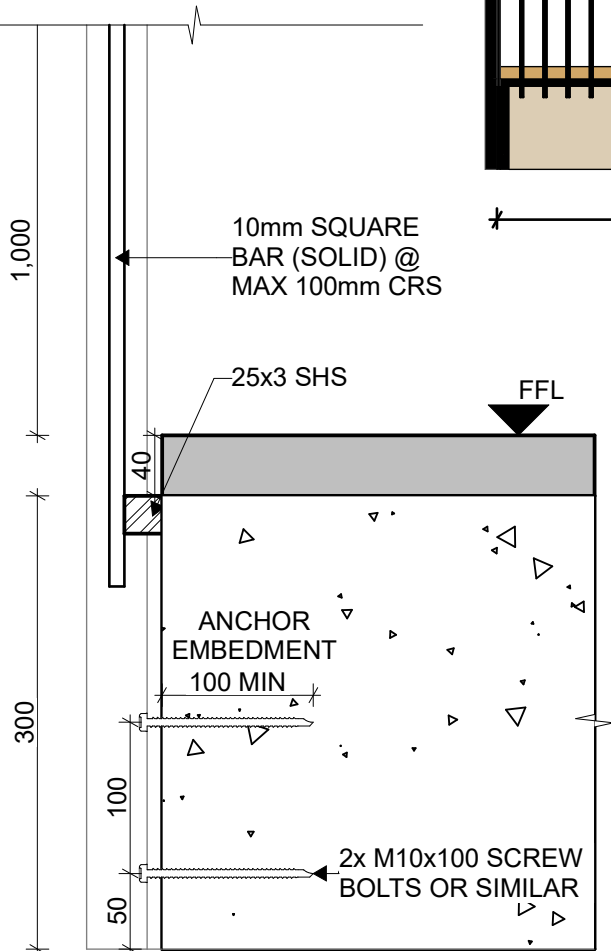


BALUSTRADE SECTION
SCALE 1:5 @ A4



BALUSTRADE ELEVATION
SCALE 1:25 @ A4



ALL CONSTRUCTION
SHALL BE IN
ACCORDANCE WITH NZBC
F4 AND REGULATIONS
AND AMENDMENTS.

FACE FIXED TO CONCRETE
SCALE 1:5 @ A4

FACE FIXED TO TIMBER
SCALE 1:5 @ A4